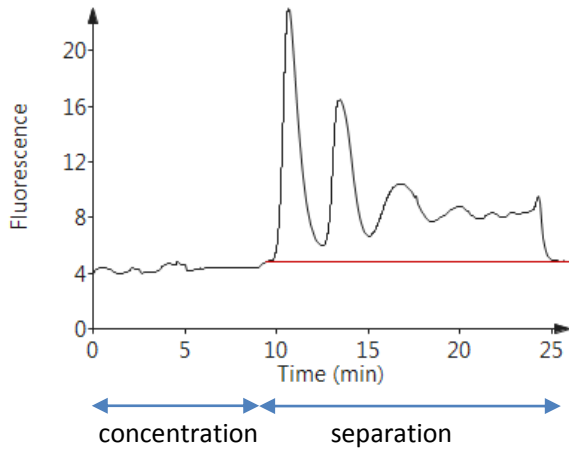
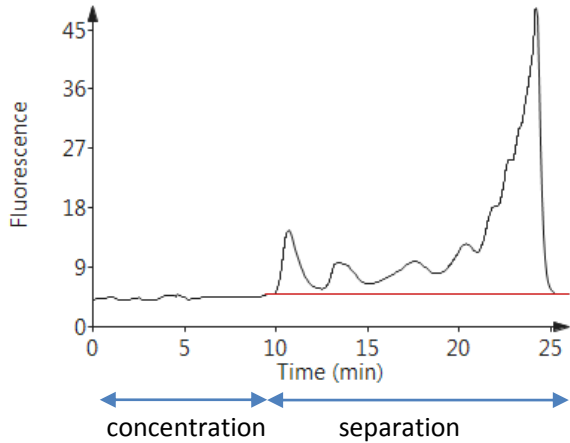


Typical raw profile of a ccfDNA sample.

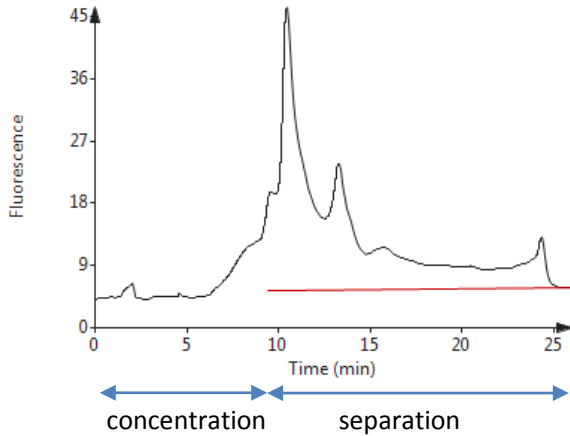
A main peak around 150 bp, followed by a second peak around 300 bp, and a low amount of larger DNAs.



Another typical profile of a ccfDNA sample.
Succession of peaks of decreasing size; the first peak is around 150 bp, the second around 300, the third around 450 bp,....



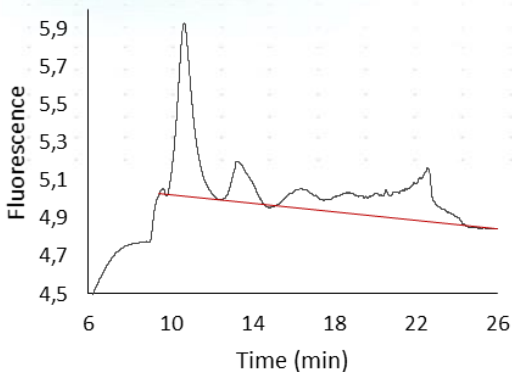
Raw profile of a ccfDNA sample containing a high amount of high molecular weight DNA.



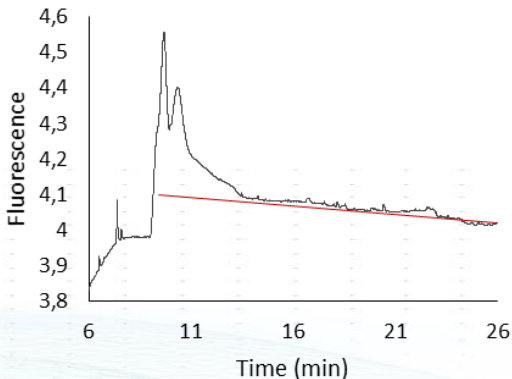
Raw profile of a ccfDNA sample containing a lot of small DNAs leaking during the concentration step.

Reliable ccfDNA profiling, even with tiny amount of DNA

Picometrics BIABooster system allows to profile even though DNA concentration is very low



ccfDNA at 9 pg/μl.
Small signal, normal profile



ccfDNA at 7 pg/μl.
Small signal, degraded profile